



SE VIEW ~ AM, UP DRIVE



WEST VIEW ~ AM
ATTRACTIVE
DISTANT VIEWS



SE VIEW - EUCALYPTUS
ATTRACTIVE SHADE
PATTERNS



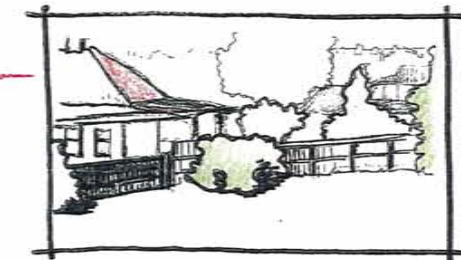
NW VIEW - PM



FIGURE/GROUND PLAN

DOMINANT LOCAL
HOUSING STOCK
IS SMALL EARLY
20TH COTTAGES
WEATHER BOARD
WITH HIP ROOFS

TREES HERE
ARE WINDBURNT
AND SLOW GROWING
? WIND EDDIES



NORTH VIEW - PM



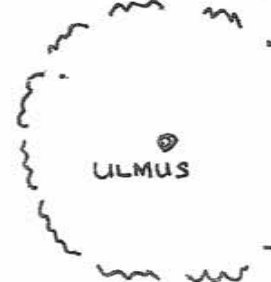
SE VIEW ~ PM
ALL DAY SUN. VERY
HOT AREA IN PM



DECK

GRADUAL SLOPE
DOWN SITE

BETULA PENDULA



MELALEUCA ARMILLARIS

EUCALYPTUS
AMYGDALINA

BETULA PENDULA x2
(STUNTED)

BETULA PENDULA x3

PRUNUS

EXISTING VEGETATION AND CONTOURS

- EVERGREEN
- ⊗ REMOVE
- ⊙ DECIDUOUS
- ⊙ EXTENT OF POTENTIAL GROWTH

1:200



35m ASL

36m ASL

37m ASL

38m ASL

16300mm

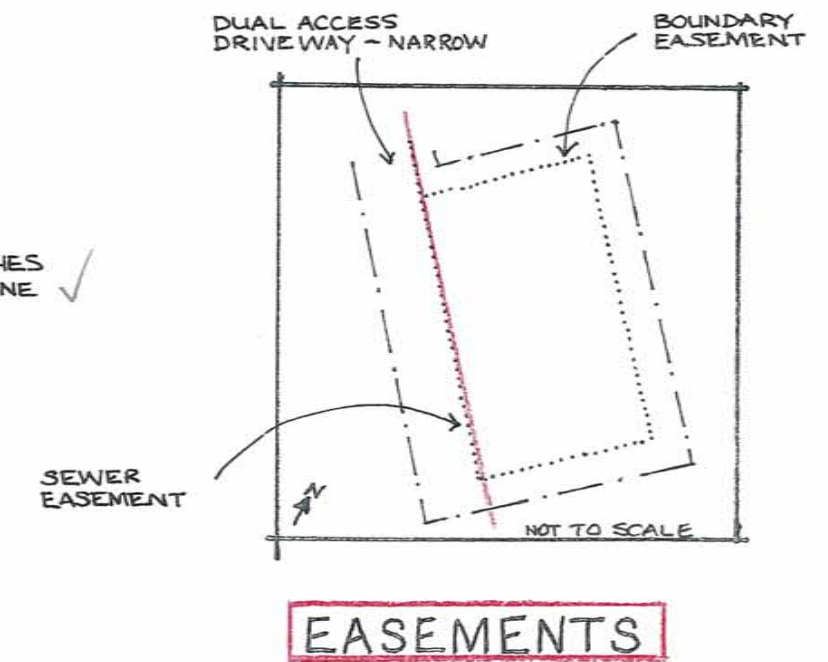
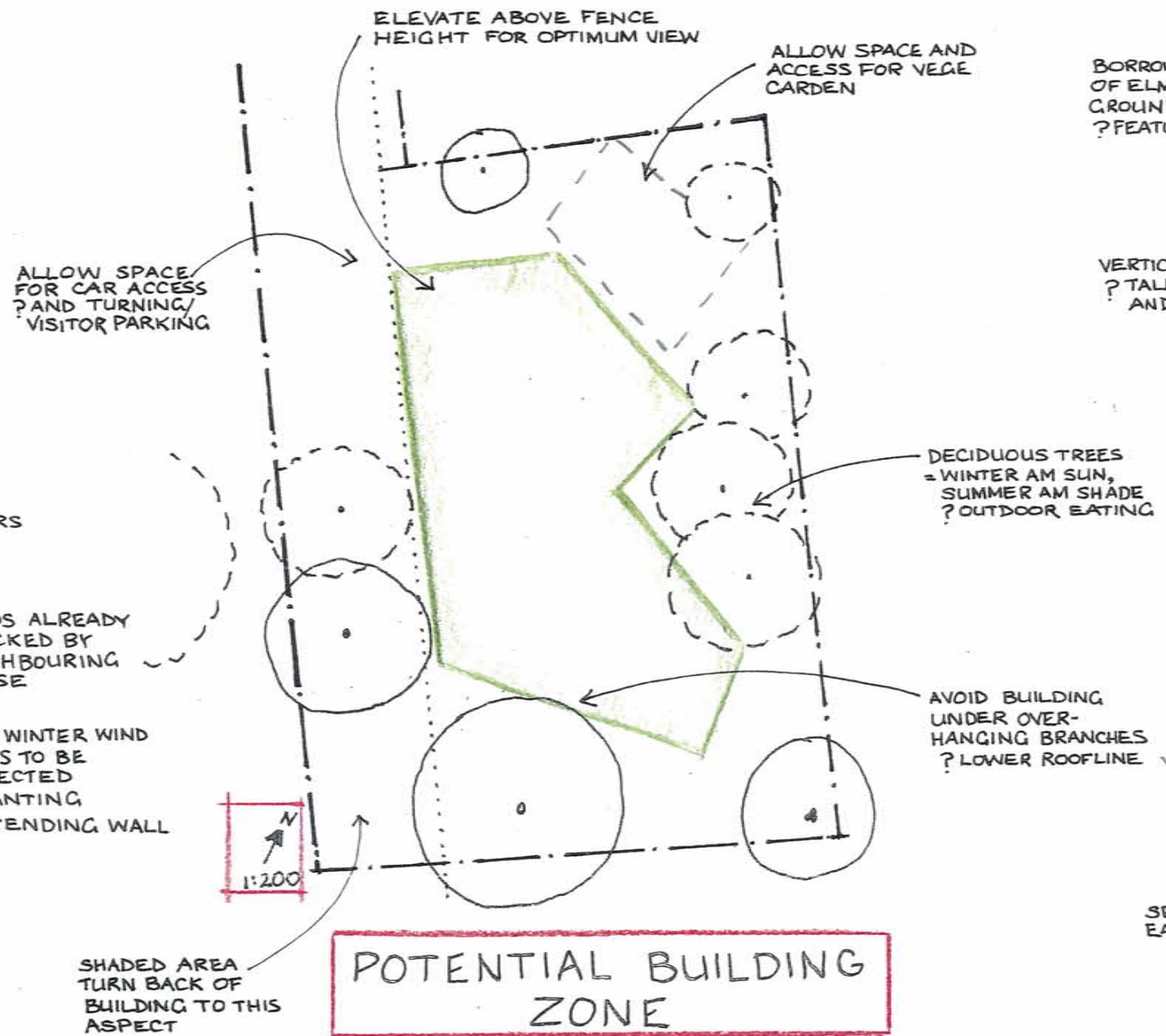
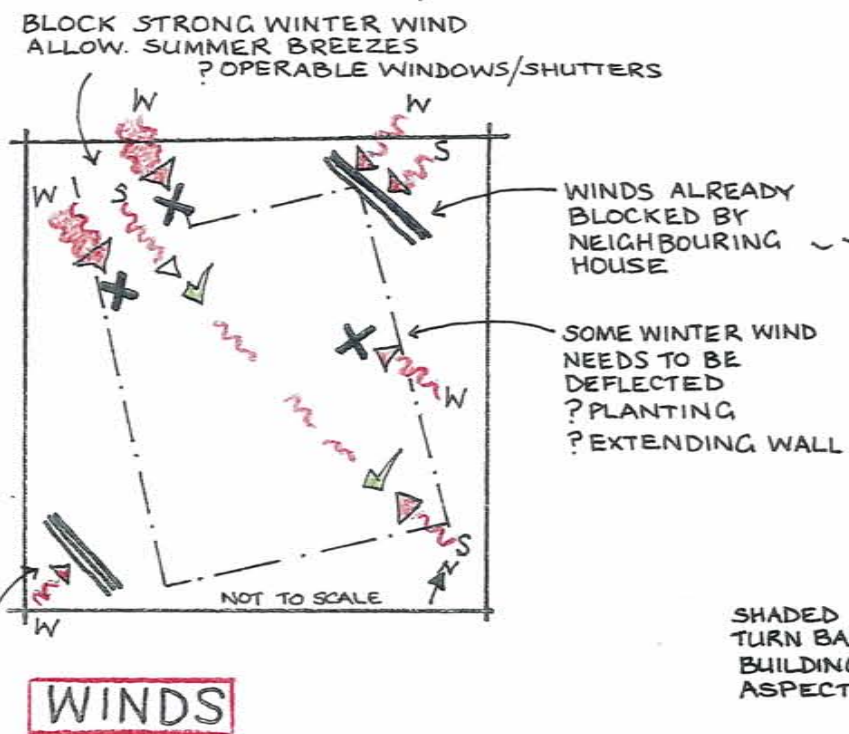
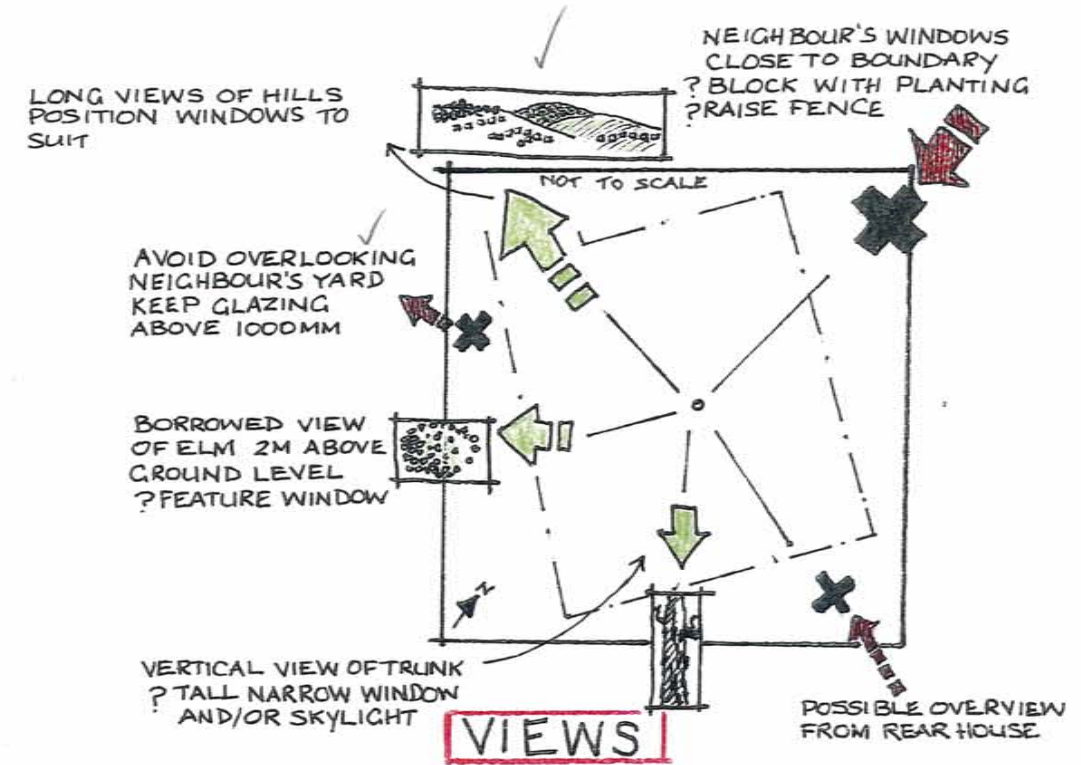
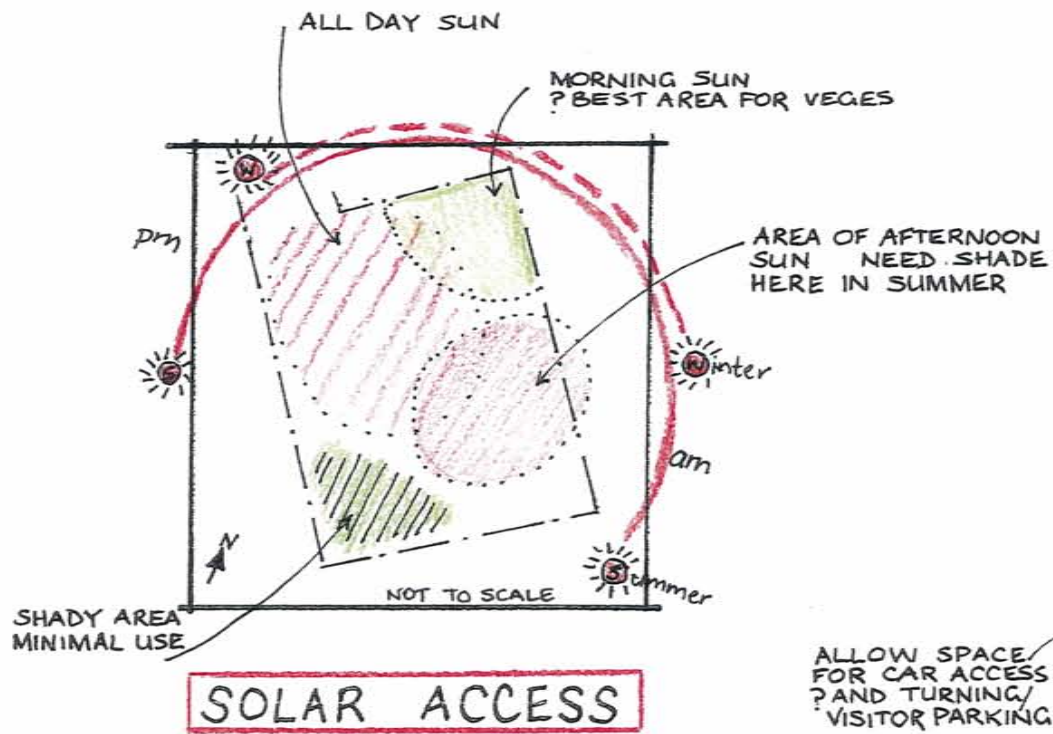
16100mm

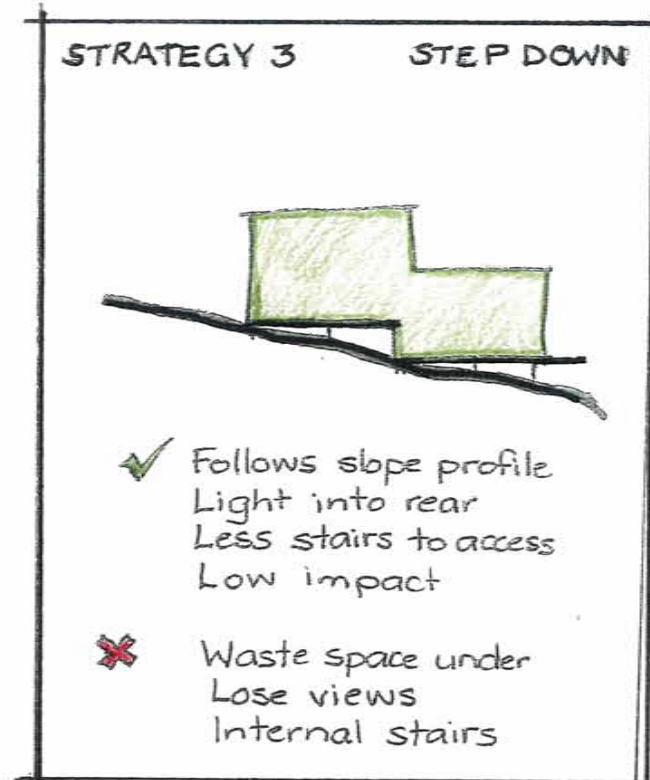
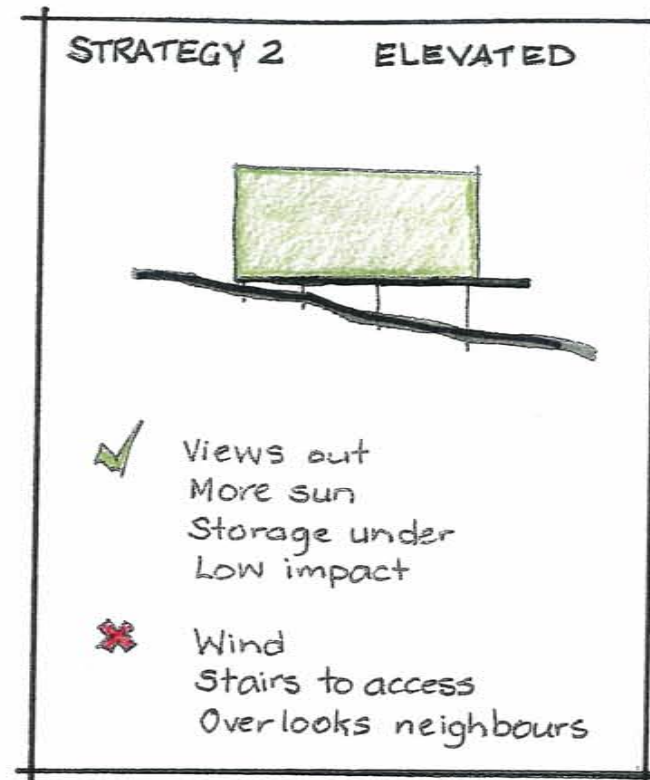
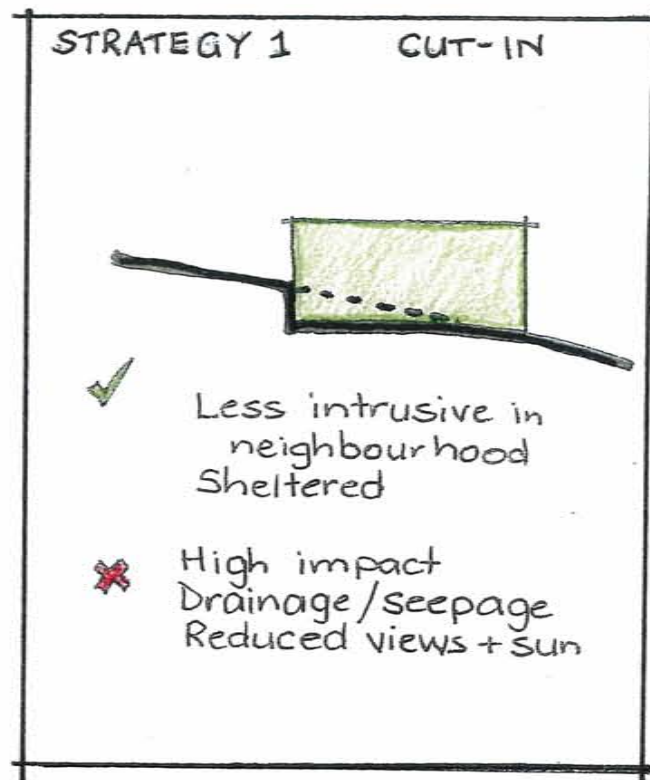
22500mm

23600mm

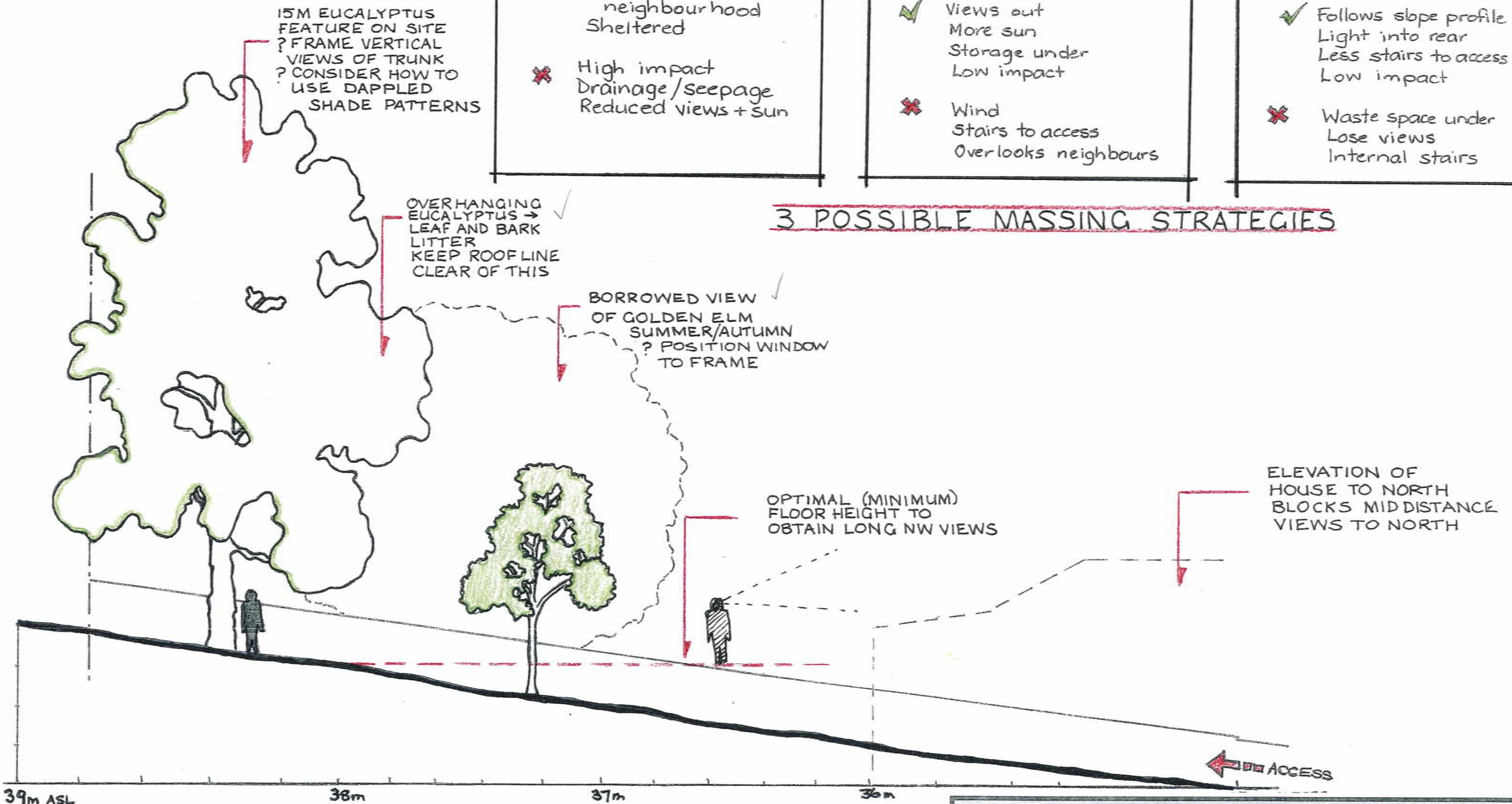
1 57A MELBOURNE ST **SITE DOCUMENTATION**
DS3, 2008 AT1 W. Roberts

*It is gorgeous
Wendy, well done!*





3 POSSIBLE MASSING STRATEGIES



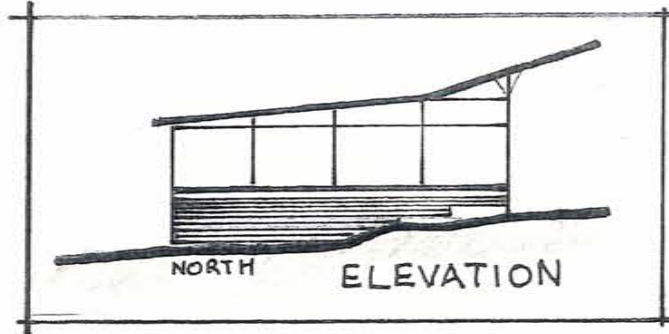
39m ASL 38m 37m 36m

SECTION A-A 1:100

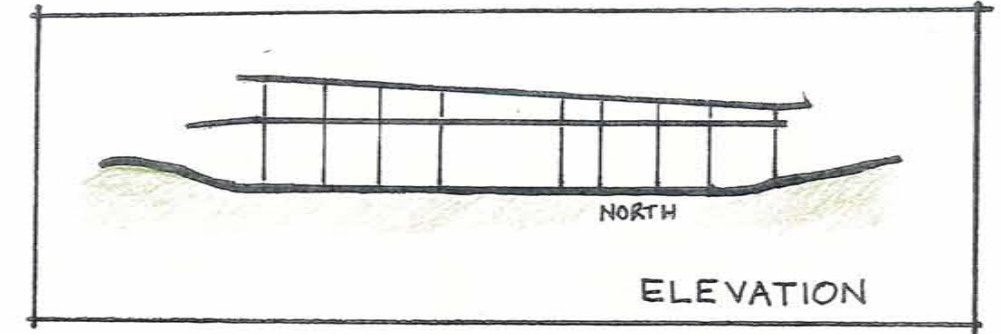
3 SECTION ANALYSIS
 DS3, 2008 AT1 W. Roberts #763201

ARCHITECT: PETER STUTCHBURY PROJECTS:

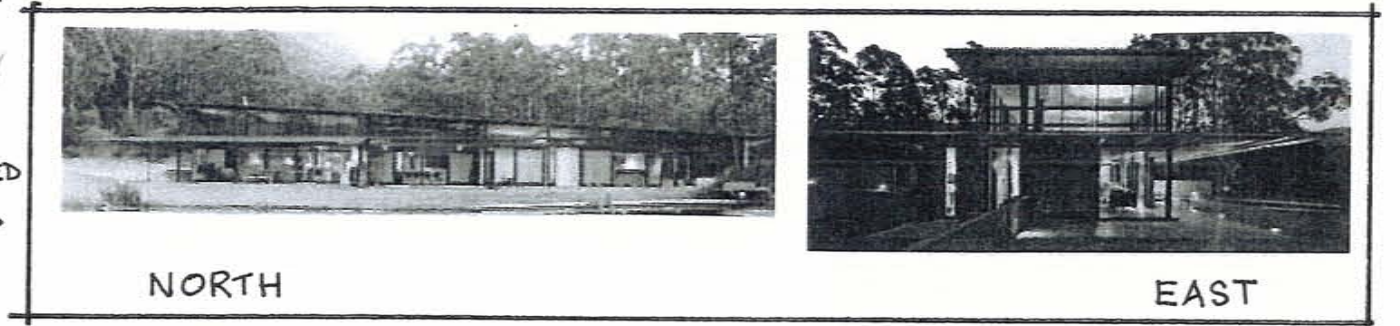
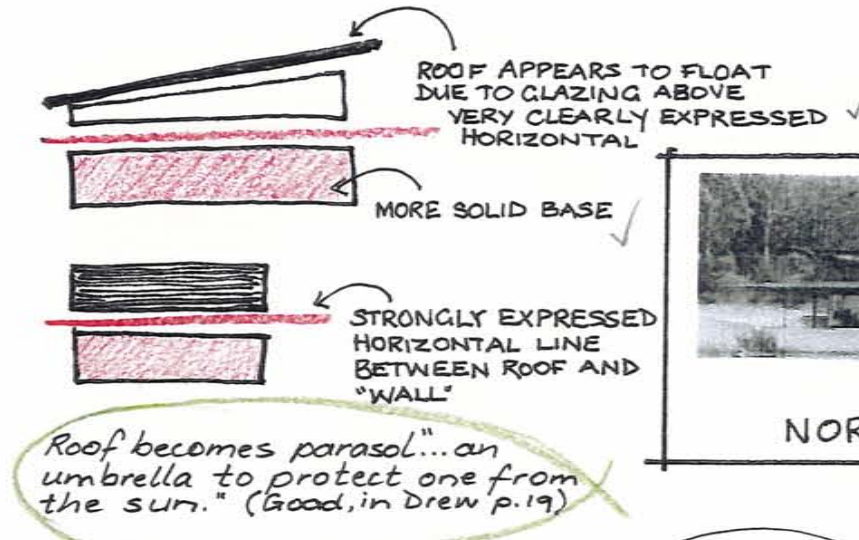
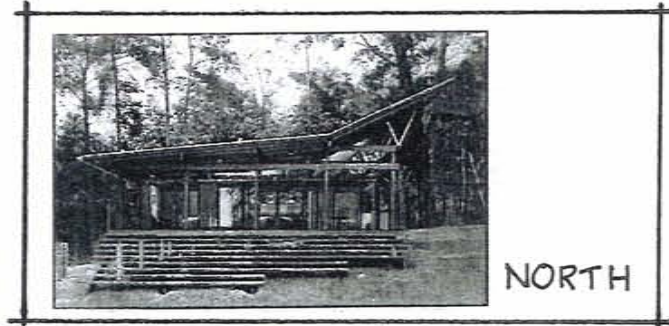
A - KANGAROO VALLEY PAVILION, 1996-8
 B - BANGALAY, NSW, 2000-2003
 REFERENCES: DREW, PHILIP. PETER STUTCHBURY, PESARIO PUBLICATIONS, 2003 www.azetecture.org/tutors



A

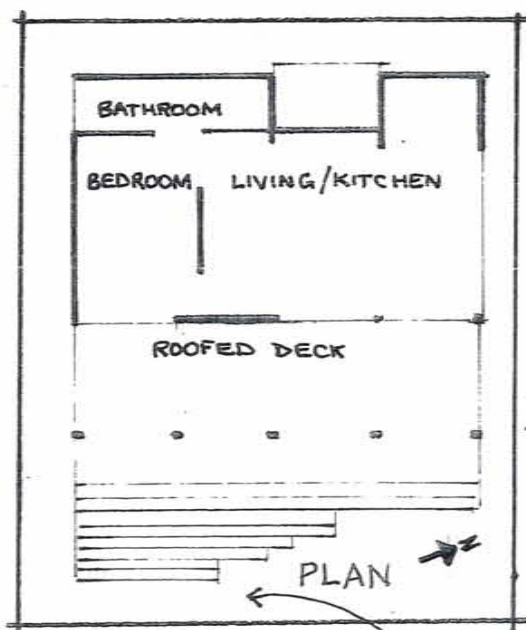


B

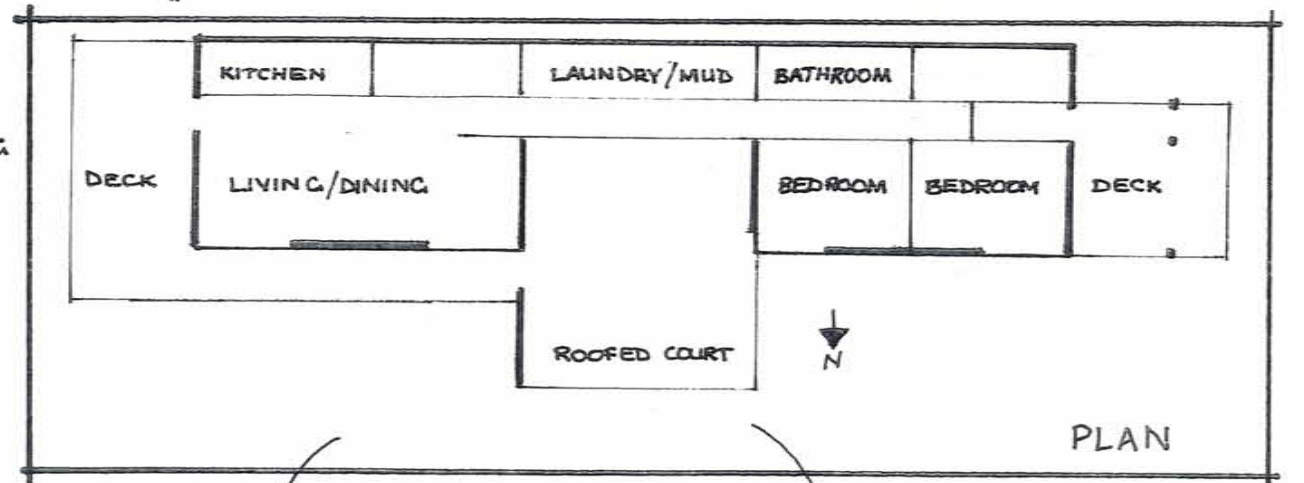
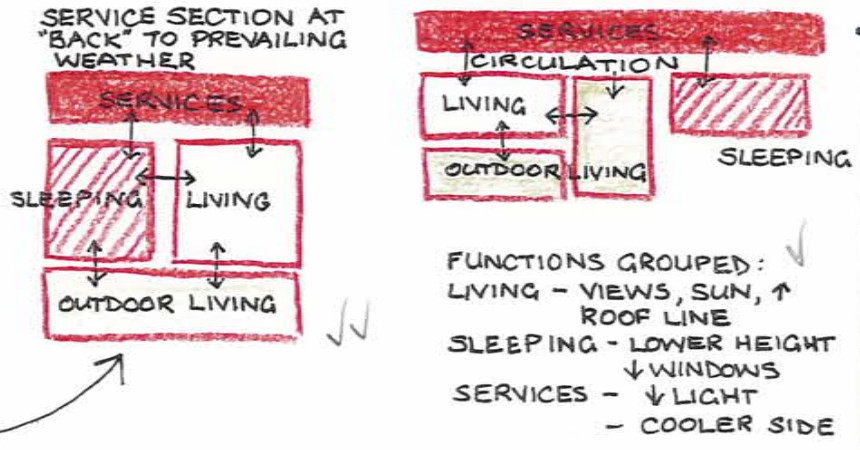


NORTH

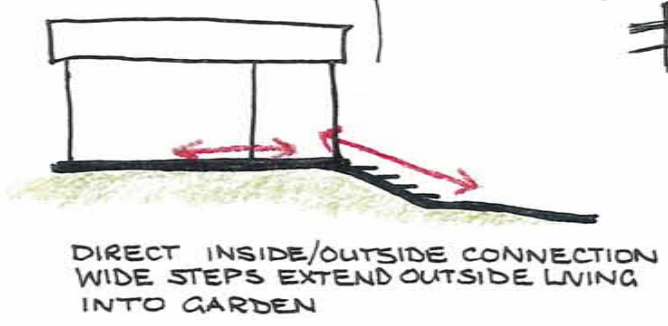
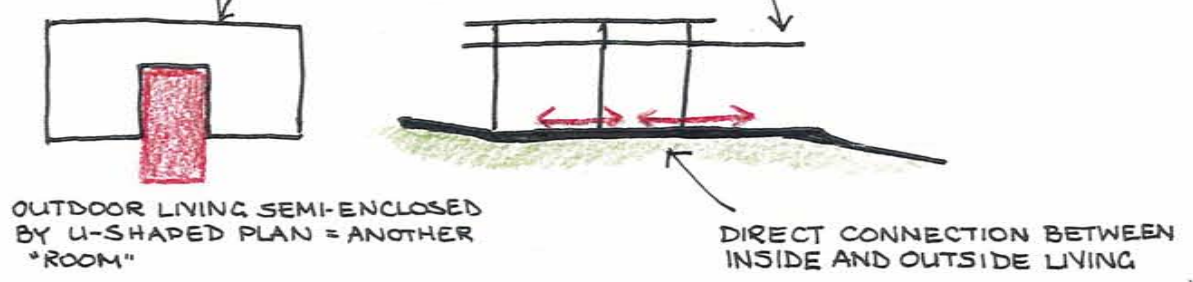
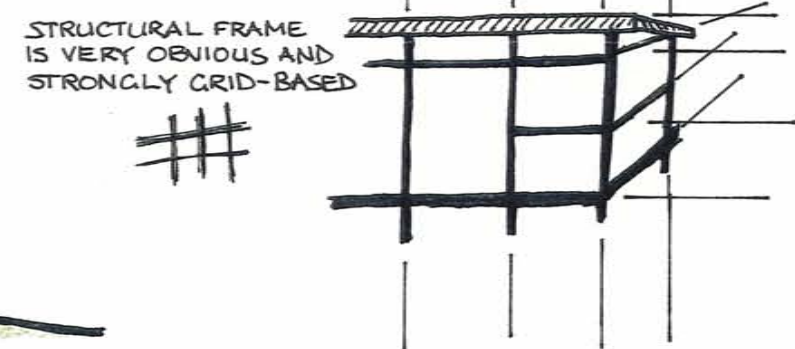
EAST



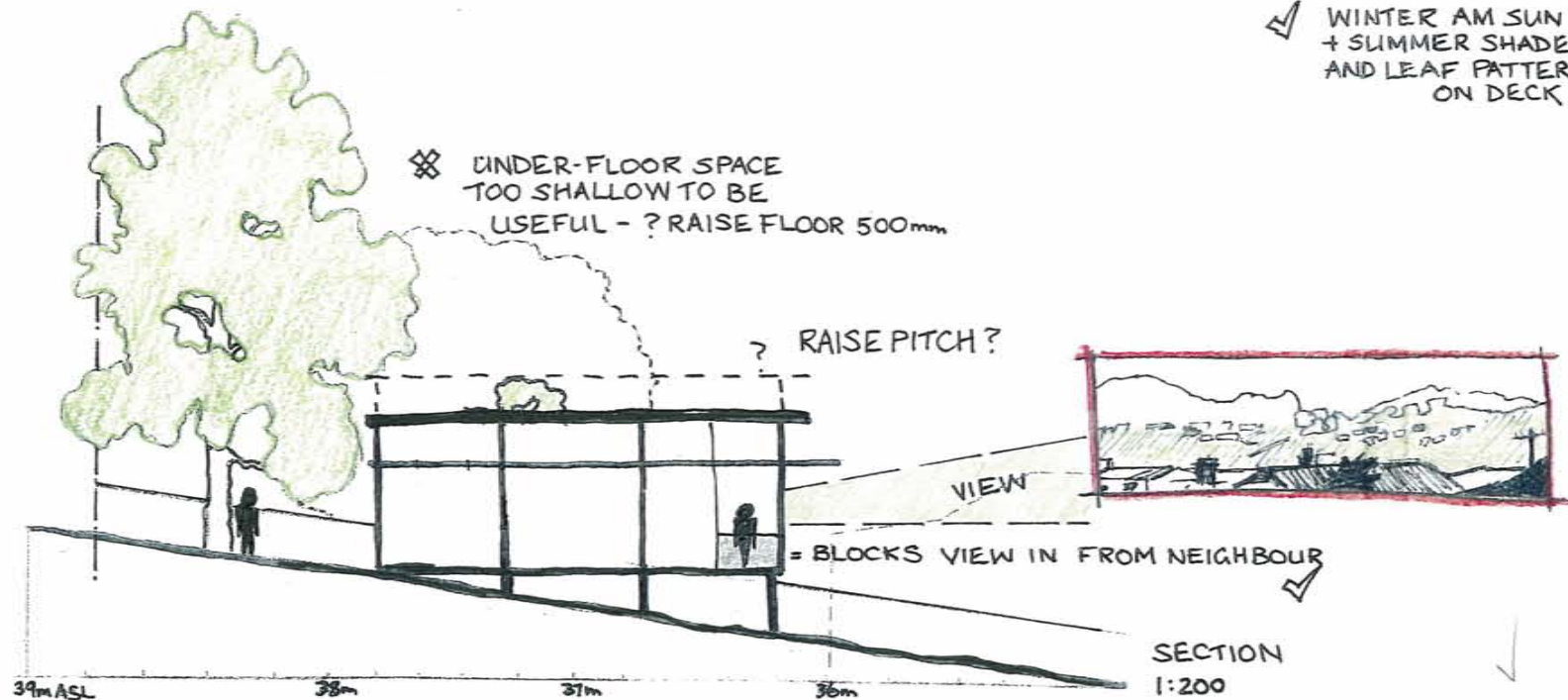
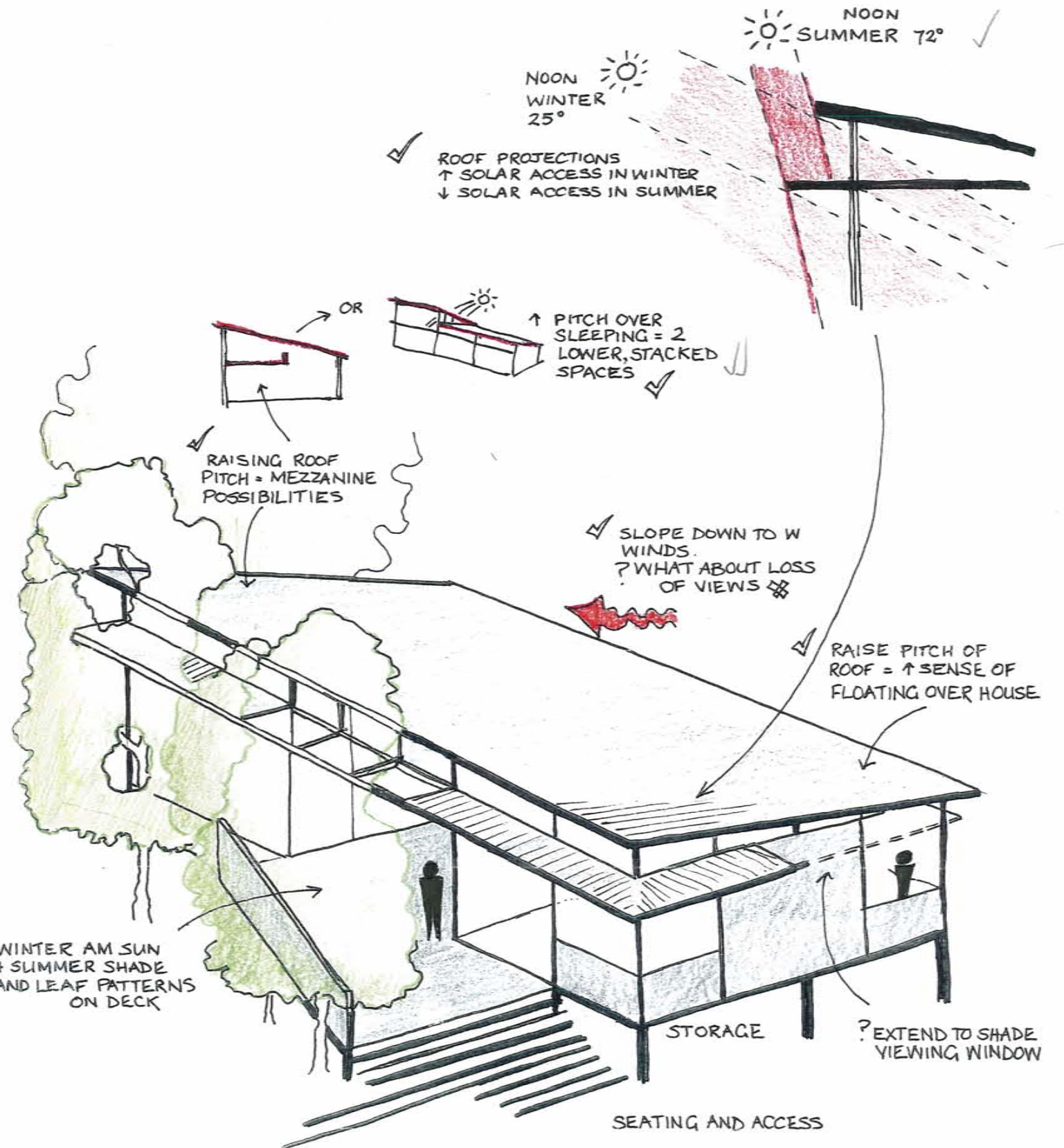
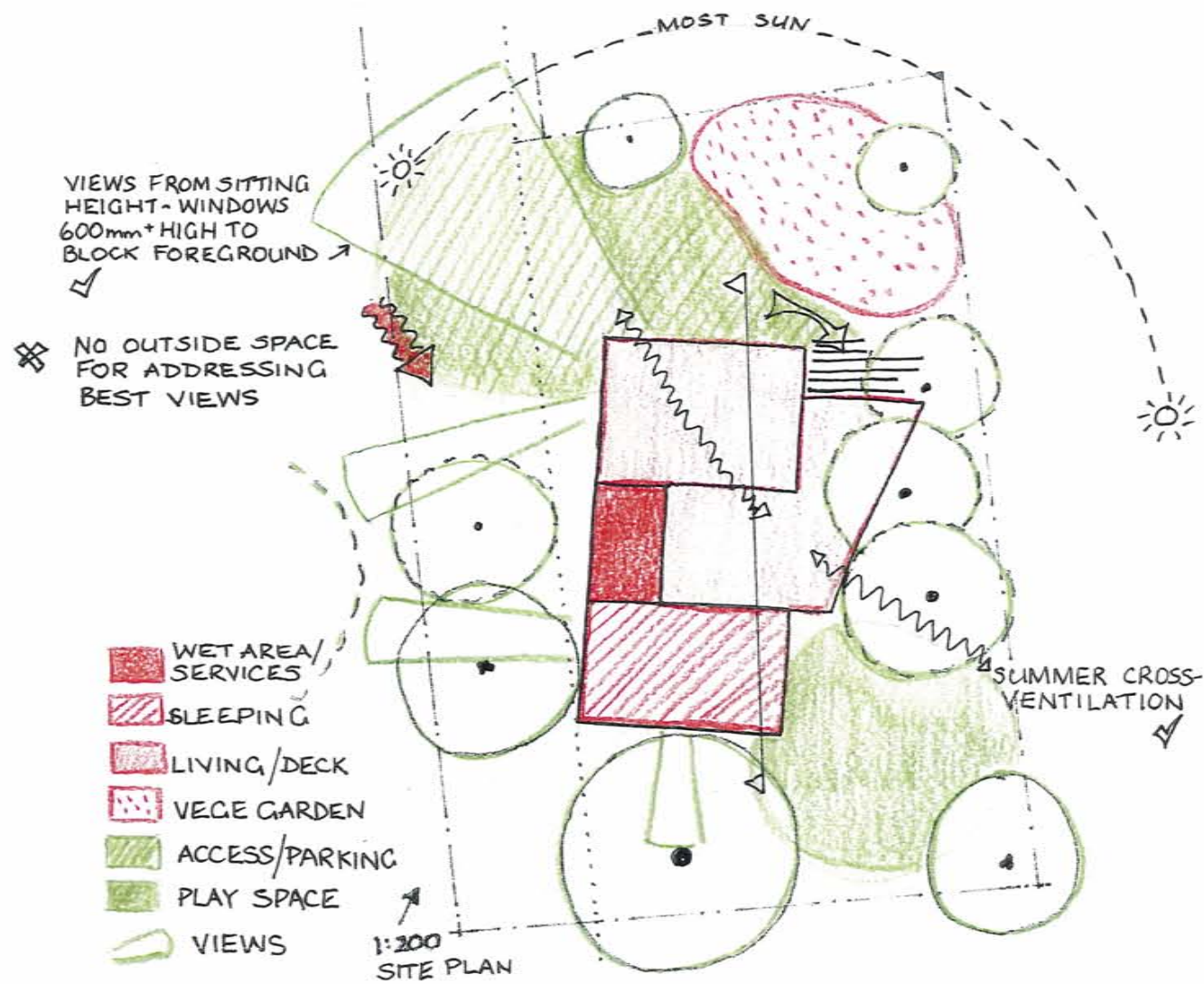
PLAN

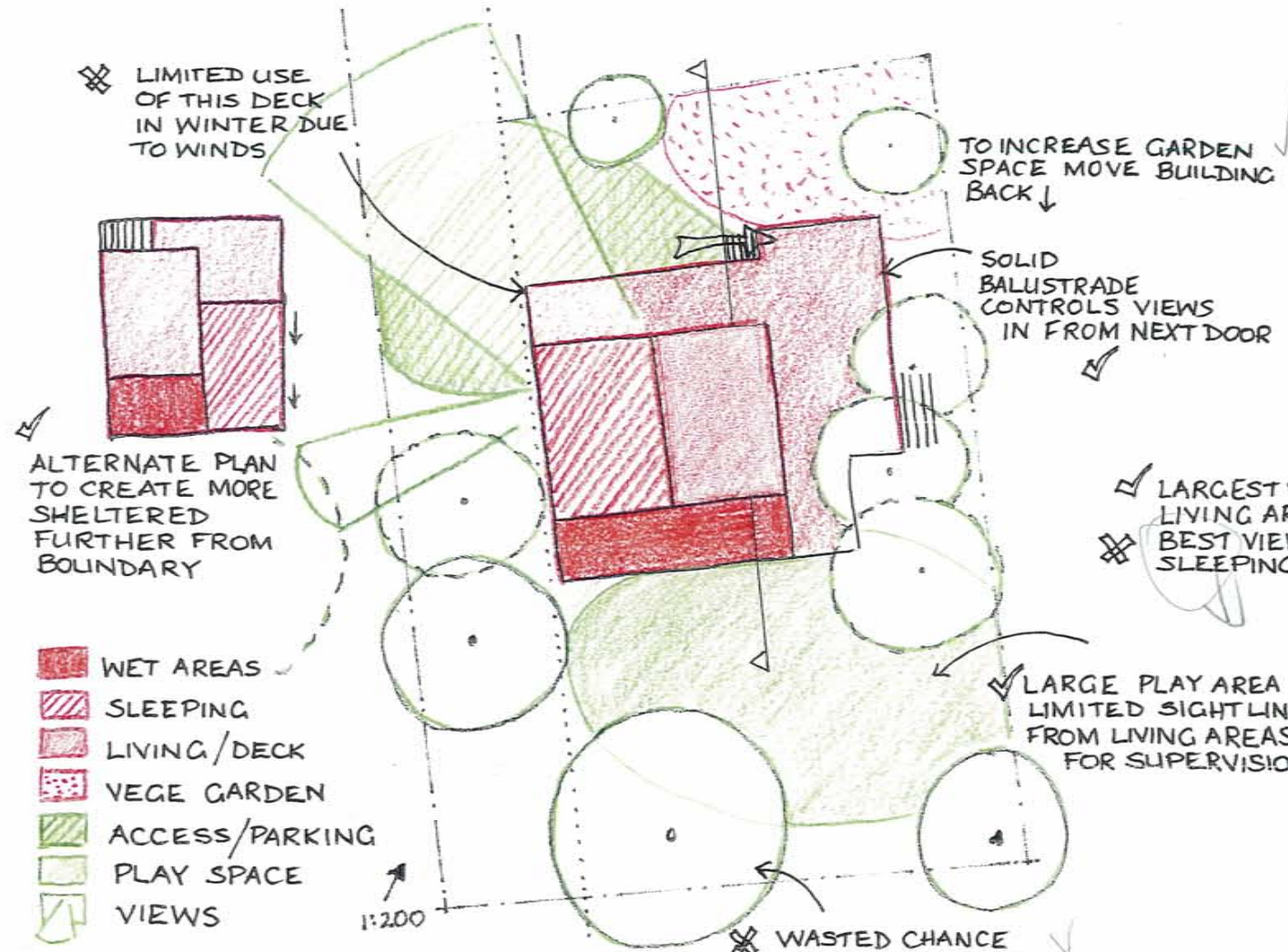


PLAN



Very good.

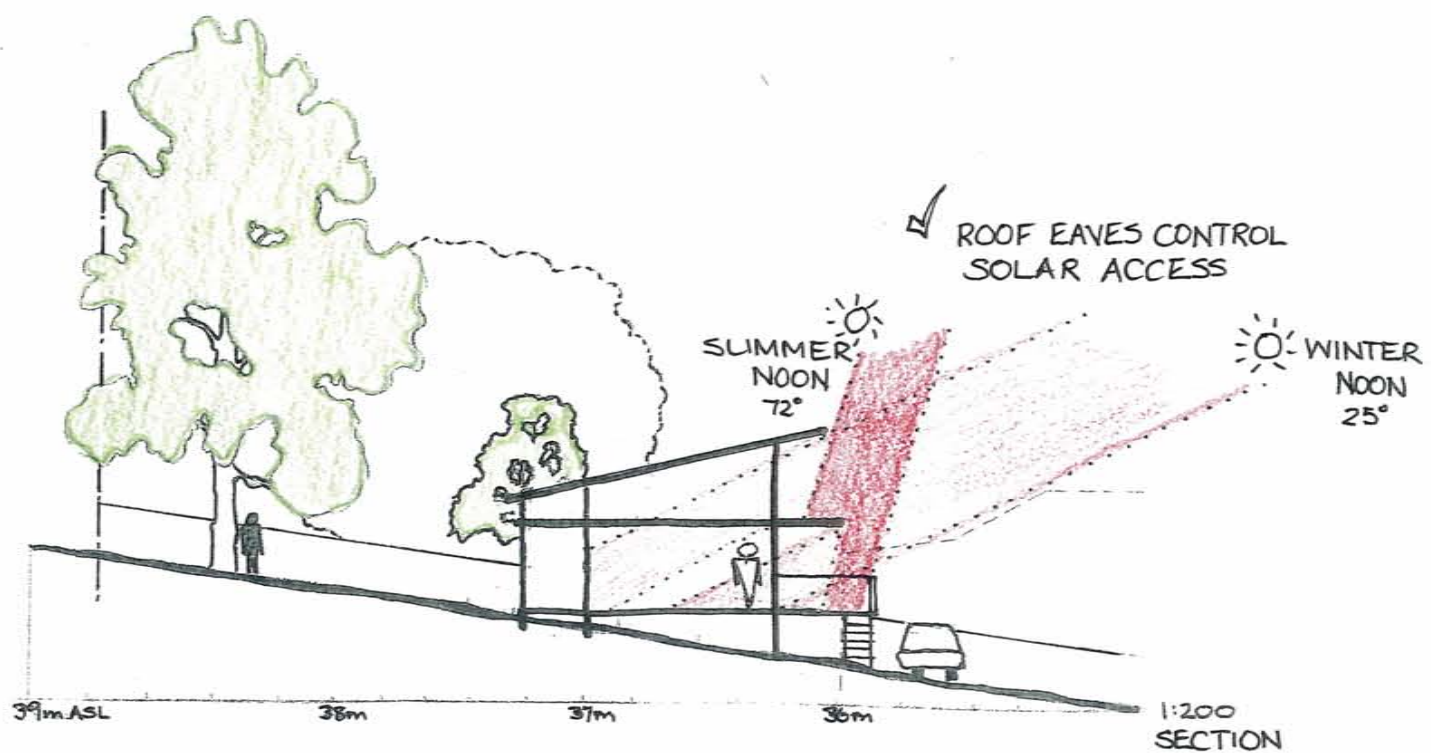
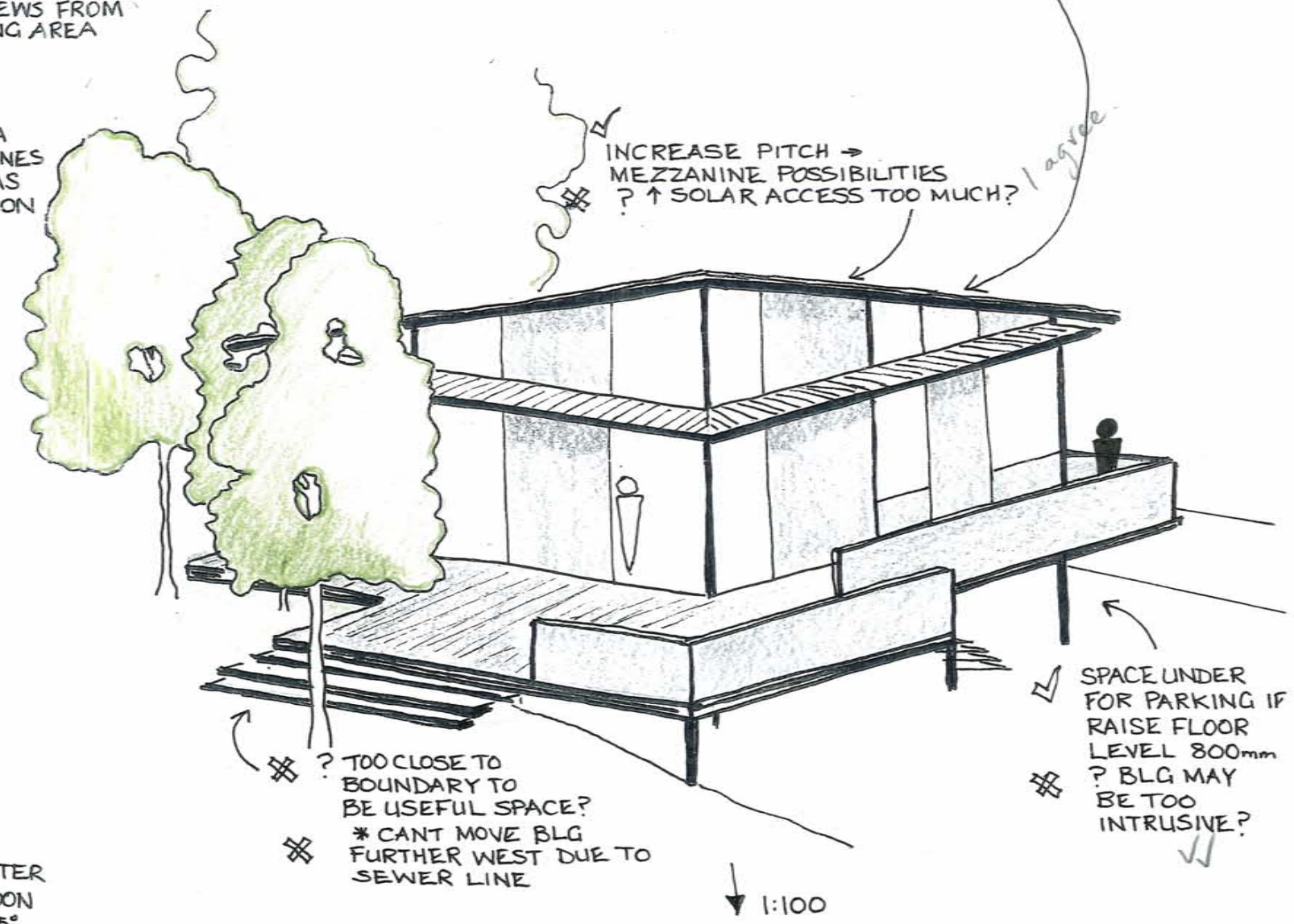




✓ LARGEST VOLUME IN LIVING AREA, BUT BEST VIEWS FROM SLEEPING AREA

✓ LARGE PLAY AREA LIMITED SIGHT LINES FROM LIVING AREAS FOR SUPERVISION

✗ WASTED CHANCE TO VIEW EUCALYPT FROM INSIDE
 ✓ GOOD FOR PLAYING UNDER/IN



AT1: Preliminary Design (20%)

Due date Tuesday 18 March, 2008

Work to be pinned up by 1pm

Approximate time commitment

Total 30 hours, which includes: 6 hrs x 4 week (lectures/studio/outside studio/prep) and 6-8 hrs (prepare work for presentation)

Learning Outcomes

LO1 Apply appropriate design processes for creative generation of ideas & solutions through different design stages that responds to analysis and the brief
LO2 Judge architectural ideas & solutions to develop strategic thinking
LO3 Apply architectural graphic conventions to communicate design processes & solutions

Description

This task involves the **preliminary** design of the Melbourne Street House (refer to brief at the end of AT1). This stage results in the identification of a number of design options, in section & axonometric describing merits and disadvantages through annotations. To do this successfully the task involves four different processes:

Site documentation: recording both quantitative (*numerical*) and qualitative (*sensing/sketching*) data collected on site and via other sources such as the Bureau of Meteorology

Site analysis: recording and editing the many layers of information and discerning what are the significant factors and how does that suggest potential sites to locate the house and its mass in the landscape. At the end of this process, a new site analysis plan and section will emerge describing the significant issues to work with in the design

Precedent analysis: select an Australian architect from the 1960s onwards (make sure your selection is different or contrasts your choice for HTD3, otherwise you will not benefit from two different architectural approaches). The emphasis of the precedent analysis is on identifying and analysing the selected architect's principles/strategies in terms of:

- How are the spaces constructed? What are the key elements that define spaces or rooms? How are spaces connected?
- Space & form in the landscape (relation to ground and the sky? Volumetric arrangement?).
- How has the architect overlaid or combined spaces for different activities or generated privacy?

Concept sketches/inklings: after visiting the site and developing the brief, designers begin to sketch inklings that explore first ideas or visions.

Using the material analysed from the site, precedent and inking studies **generate a number of different concepts** in terms of the design location on the site and the building's space and volumetric arrangement. Using these sets of drawings, evaluate their merits and disadvantages through annotations & nominate your preferred concept. Also link and justify the designs to your site analysis (It should be clear how the different concepts have been generated). Nominate at the end of this process which concept you want to develop further, in the next stage of the design and a few key points why.

▪

The emphasis is on the design of spaces particularly in section and volumes.

Hand-in requirements

Hand drawn/drafted on trace/ detail paper A3 (max 6 sheets) to be **photocopied for presentation/submission**. Sheets to include:

Site Analysis plan and section (to scale) conveying significant factors as well as some visual aides describing the qualities of site, vegetation, light, important views (both excellent views and ugly views to potentially screen);

precedent analysis/ strategy diagrams and Ideation/inkling sketches (*labels and concise annotations – no paragraphs!*); and

A number of different concepts illustrated individually on-site plan, in section and in axonometric (**to scale**) with evaluating annotations

Assessment criteria/rubric

Learning Outcomes	CONCEPTUAL DESIGN Tasks	PP	CR	DN	HD
LO1 Apply appropriate design processes for creative generation of ideas & solutions through different design stages	Site documentation & Analysis + Conceptual design explorations & development	The content & sequence design work demonstrates generation of basic ideas, different design options and final design choices.	The content & sequence of design work demonstrates & compares a range of different design ideas & strategies resulting creative & distinct design options allowing informed final design choices.	The content & sequence of design work demonstrates many plausible ideas & strategies that are evaluated & developed into creative & distinct design options allowing informed final design choices.	The content & sequence of design work demonstrates a broad & creative range of ideas, strategies & evaluation that result in distinct design options allowing informed coherent final design choices.
LO2 Judge architectural ideas & solutions to develop strategic thinking	Annotation of drawings explaining design decisions & their relations (no essays, no paragraphs, either!)	The annotated sequence of design decisions show basic judgement skills and logical development towards explanation and evaluation of designs.	The annotated sequence of design decisions are directly related to the design process and provide explanation and evaluation of emergent strategies & designs.	The sequence of design decisions shows strategic judgement with annotation explaining and relating a progression of decisions clearly justifying designs.	The sequence of design decisions shows strategic & sophisticated judgement with annotation coherently explaining and relating a progression of creative design decisions justifying designs.
LO3 Apply architectural graphic conventions to communicate design processes & solutions	Scaled hand drawing to scale using descriptive & diagrammatic conventions using different line thicknesses + General expressive freehand sketching for testing ideas + Editing, laying out & annotation for studio sessions & presentations	Scaled hand drawings have a basic clarity & accuracy supported by some expressive sketching testing ideas. The layout, editing & annotation communicate design solutions and basic relations between ideas and process.	Scaled hand drawings show accuracy & the application of graphic conventions. Line weights make drawings easy to read. Expressive sketching tests key ideas. Layout, editing and annotation guides the reader in understanding design process ideas and solutions.	Line weights and application of graphic conventions give scaled hand drawings consistent accuracy that makes ideas, processes and solutions legible. Expressive sketching tests many ideas and shows emergent strategic exploration. Layout, editing and annotation make comprehension of all studio work easy.	Line weights and application of graphic conventions give scaled hand drawings accuracy & an overall graphic coherence that makes ideas, processes and solutions explicit. Expressive sketching evaluates and extends many design ideas & augments strategic development. Layout, editing and annotation skilfully worked together.

Project Brief – Melbourne Street House –

Part 1

This project requires you to design a small house, **under 50 square metres** for Bruce and his daughter Rosie. Bruce is a physiotherapist and in his late thirties. He works at Launceston General Hospital. His daughter Rosie (4 years old) stays with him every second week. Bruce owns a VW Golf, but generally rides his bicycle to work. He also has another bike for mountain bike riding and a kayak. Bruce wants a small house for a number of reasons:

- less money required to build (approximately \$100,000); and
- smaller space means less space to heat and clean.

He has decided to build because he found it difficult to find a small and contemporary house that also has a large enough yard to allow for a vegetable patch, the collection of rain water and maximises solar gain. Bruce found that many small houses were over catered for his needs, in terms of the kitchen set-up, laundry and too many small rooms.

The block of land was chosen due to its close proximity to work and the city as well as the number of established trees. Bruce has asked for the house to be designed using timber framing, as his brother works for a saw-mill.

List of Bruce's required places and needs.

A place:

- to have drinks or a meal with friends both in summer and winter (can range from a couple people to 12 or so)
- to relax and listen to music, read a book, or watch television
- for Rosie to play (currently she enjoys drawing and colouring, dress-ups, building with blocks and Lego and sometimes watches dvds)
- to do some work on a laptop computer
- to store a number of books/ magazines and fold-out maps. (approximately, 12 linear meters)
- to store clothes, both for Bruce and Rosie
- to wash and hang clothes out. Needs to be closely linked to bathroom or where clothes are stored
- to iron
- to hang washing where it will dry but be protected from the rain
- to barbeque
- to prepare food and cook (inside) – two plate stove (gas), small/ compact dishwasher, oven, small sink, a fridge with freezer compartment, minimum food storage area.
- to sleep – Bruce has a queen sized bed and Rosie has a single bed
- to wash and bath – shower and bath – the toilet can be separate or combined with bathing
- to park the car (not necessary to be a garage or fully secured)
- to store bikes and bike repair equipment (needs to be secured as the bikes are worth a lot of money + kayak)

Bruce is happy to look at proposals that are split level or two storeys. The car store and outside decks are additional to the 50 square meters.